

lineLED

Scene light



Federal Signal Vama presents the new LineLED Scene light, composed by 6/12/24 very high efficiency LEDs and has been specially developed for surface mount. Its design allows covering 120° light angle and enables an easy installation at vehicle's body, turning LineLED into an excellent worklight.

With an anodized aluminum body and ABS finishing, this light become a lighter and strong model, with IP protection against dust and water.



HIGH INTENSITY: The high lighting efficiency of the optical system and LED diodes, provides LineLED Series with a 500/1000/2000 Lumens powerful light intensity.



EASY INSTALLATION: Straightforward and easy installation thanks to its surface mounting.



LONG OPERATIONAL LIFE: LED technology guarantees long operational life reducing maintenance costs.



WATER AND DUST PROTECTION: IP67 direct lighting and IP65 diffused lighting approved.



WIDE ANGLE: Its wide light output angle (120°) ensures lighting in a wide working area.



EVERY NEED SOLUTIONS: Available with direct or diffused beam, according to end user needs.

LIGHT DISTRIBUTION



Diffused lighting

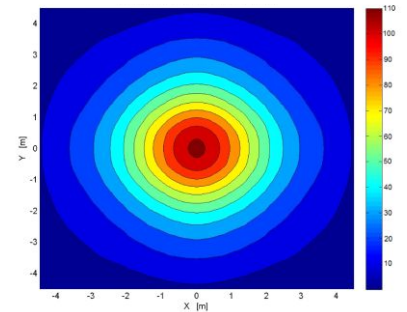


Direct lighting

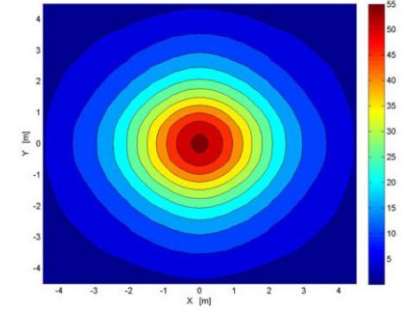
TECHNICAL FEATURES	24 LEDs	12 LEDs	6 LEDs
Intensity light output	2000 lm	1000 lm	500 lm
Power	26W	13W	6,5W
Operating voltage	12/24V	12/24V	12/24V
Current draw	12V= 1,86A 24V = 0,93A	12V= 0,93A 24V = 0,47A	12V= 0,47A 24V = 0,24A
Operating temperature	-30° - +40°	-30° - +40°	-30° - +40°
LED angle beam	120°	120°	120°
Life time at 85°	50.000 hours	50.000 hours	50.000 hours
LEDs colours	White	White	White
Connection	Cable	Cable	Cable
Weight ref. 2101158A	-	-	102,5 g
Weight ref. 2101159A	-	-	115 g
Weight ref. 2101160A	-	177,5 gr	-
Weight ref. 2101161A	-	190 gr	-
Weight ref. 2101167A	360 gr	-	-
Weight ref. 2101164A	370 gr	-	-

INTENSITY IN LIGHT OUTPUT

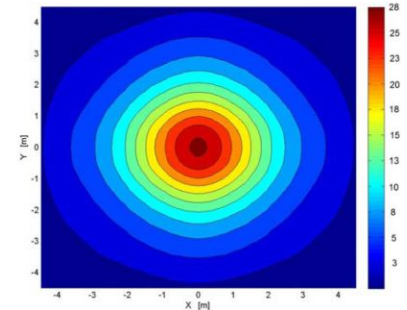
Lighting efficiency 2000lm



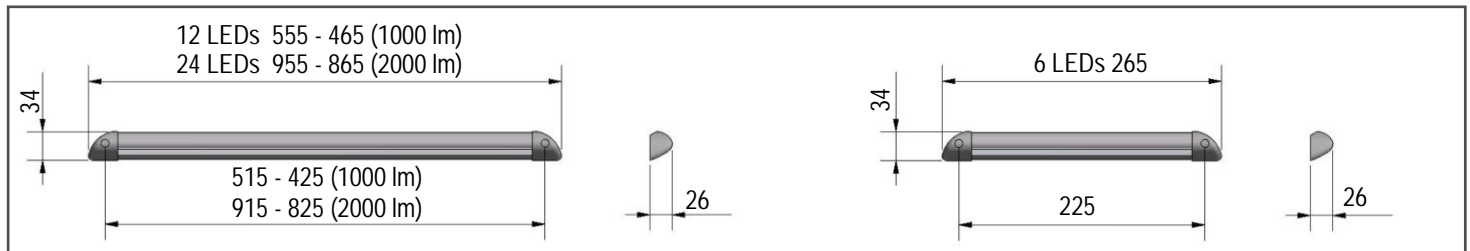
Lighting efficiency 1000lm



Lighting efficiency 500lm



Dimensions in mm:



HOW TO ORDER:

- 2101158A Scene light with 6 high intensity LEDs, 265 x 34 x 26 mm, surface mount with flat base. Direct lighting, IP67. 120° angle. Bitension 12/24V.
- 2101159A Scene light with 6 high intensity LEDs, 265 x 34 x 26 mm, surface mount with flat base. Diffused lighting, IP65. 120° angle. Bitension 12/24V.
- 2101160A Scene light with 12 high intensity LEDs, 465 x 34 x 26 mm, surface mount with flat base. Direct lighting, IP67. 120° angle. Bitension 12/24V.
- 2101161A Scene light with 12 high intensity LEDs, 555 x 34 x 26 mm, surface mount with flat base. Diffused lighting, IP65. 120° angle. Bitension 12/24V.
- 2101167A Scene light with 24 high intensity LEDs, 865 x 34 x 26 mm, surface mount with flat base. Direct lighting, IP67. 120° angle. Bitension 12/24V.
- 2101164A Scene light with 24 high intensity LEDs, 955 x 34 x 26 mm, surface mount with flat base. Diffused lighting, IP65. 120° angle. Bitension 12/24V.